

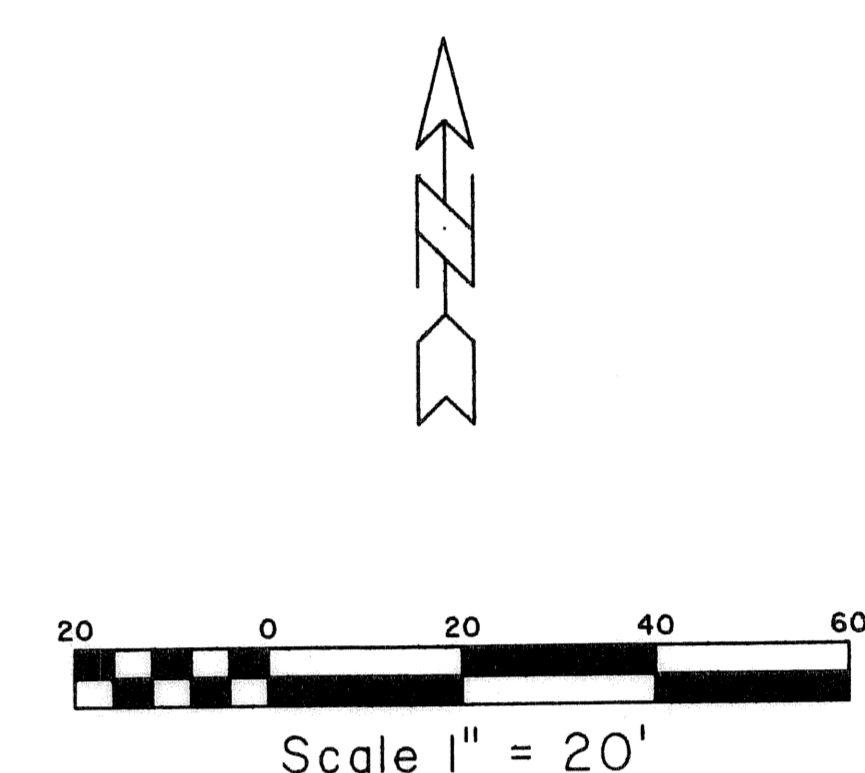
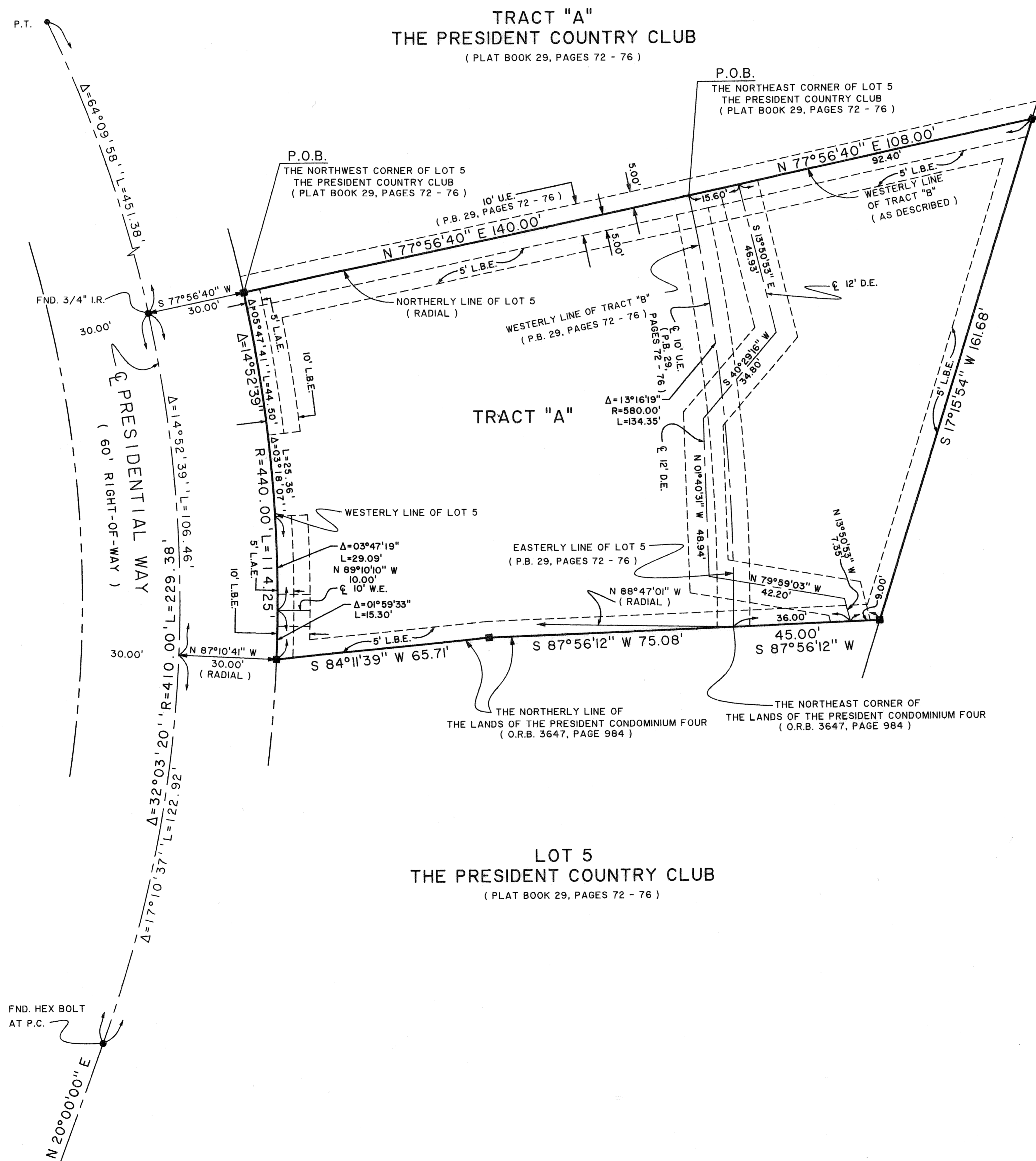
# EMBASSY PLACE

BEING A REPLAT OF A PORTION OF LOT 5 AND A PORTION OF TRACT "B", PLAT I, THE PRESIDENT COUNTRY CLUB, AS RECORDED IN PLAT BOOK 29, PAGES 72 THROUGH 76, PUBLIC RECORDS OF PALM BEACH COUNTY, FLORIDA ALL LYING IN SECTION 17, TOWNSHIP 43 SOUTH, RANGE 43 EAST, CITY OF WEST PALM BEACH, PALM BEACH COUNTY, FLORIDA.

SHEET 2 OF 2

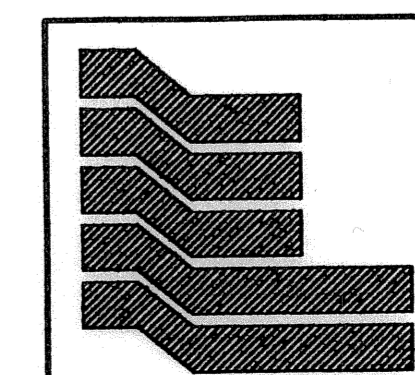
160

STATE OF FLORIDA SS  
 COUNTY OF PALM BEACH  
 THIS PLAT WAS FILED FOR RECORD AT \_\_\_\_\_  
 M., THIS \_\_\_\_\_ DAY OF \_\_\_\_\_ 2005  
 AND DULY RECORDED IN PLAT BOOK NO. \_\_\_\_\_  
 ON PAGE \_\_\_\_\_  
 DOROTHY H. WILKEN,  
 CLERK OF THE CIRCUIT COURT  
 BY \_\_\_\_\_ D.C.



TRACT "B"  
 THE PRESIDENT COUNTRY CLUB  
 ( PLAT BOOK 29, PAGES 72 - 76 )

LOT 5  
 THE PRESIDENT COUNTRY CLUB  
 ( PLAT BOOK 29, PAGES 72 - 76 )



**Landmark Surveying & Mapping Inc.**  
 1850 Forest Hill Boulevard  
 Ph. (561) 433-5405 Suite 100 W.P.B. Florida  
 LB # 4396

**EMBASSY PLACE**